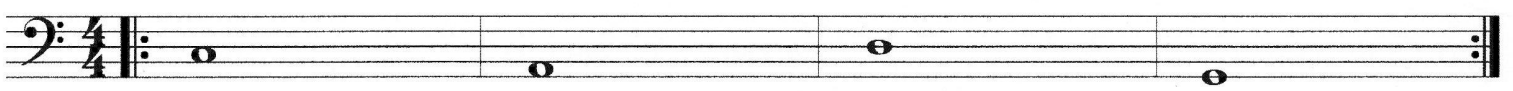


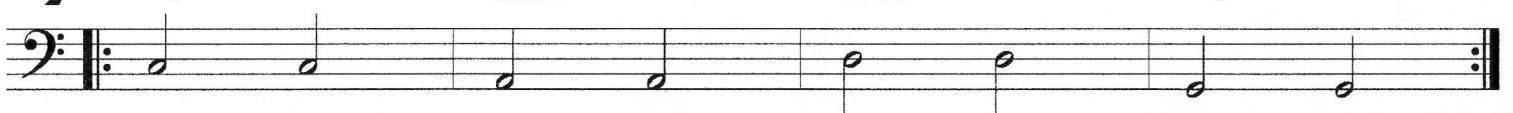
Como tocarlos

- 1) Tocar cada estructura repitiéndolas varias veces con metrónomo a negra = 80, negra = 100 y negra = 120.
- 2) Tocar las estructuras de corrido (con su repetición respectiva) por cada pagina. Ej. 1 al 8, 9 al 16 etc.
- 3) El alumno deberá escribir sobre las formulas ya hechas otras nuevas utilizando los recursos y mezclarlos. Hacerlo pagina por página.
- 4) El alumno deberá improvisar las formulas ya hechas utilizando los patrones de cada pagina.
- 5) El alumno deberá improvisar utilizando los recursos vistos en las 5 páginas.
- 6) Una vez realizados los puntos anteriores se podrán modificar las ubicaciones de las fundamentales de los acordes para lograr mayor variedad timbrica.
- 7) Transportar a otras tonalidades y tocar el punto 6.
- 8) Ampliar los acordes tocando I, III y V, mezclando todo lo anterior.
- 9) El acompañamiento del profesor será interpretado en los siguientes géneros: funk, candombe y reggae.

1 C Am Dm G<sup>7</sup>



2 C Am Dm G<sup>7</sup>



3 C Am Dm G<sup>7</sup>



4 C Am Dm G<sup>7</sup>



5 C Am Dm G<sup>7</sup>



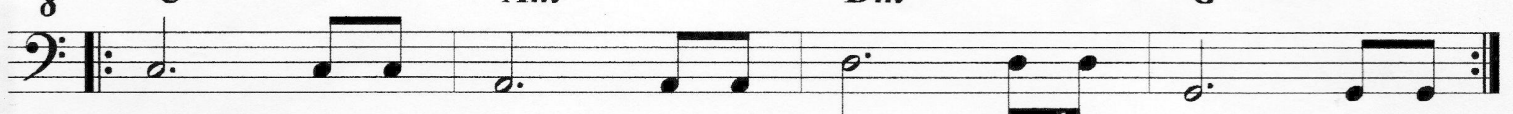
6 C Am Dm G<sup>7</sup>



7 C Am Dm G<sup>7</sup>



8 C Am Dm G<sup>7</sup>







17 C

Am

Dm

G<sup>7</sup>



18 C

Am

Dm

G<sup>7</sup>



19 C

Am

Dm

G<sup>7</sup>



20 C

Am

Dm

G<sup>7</sup>

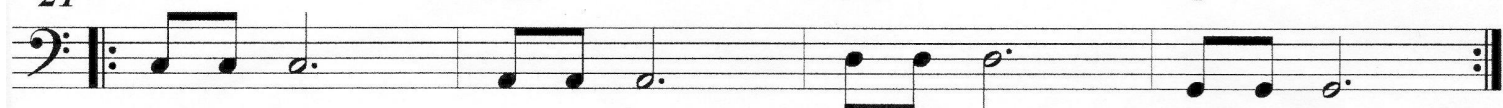


21 C

Am

Dm

G<sup>7</sup>

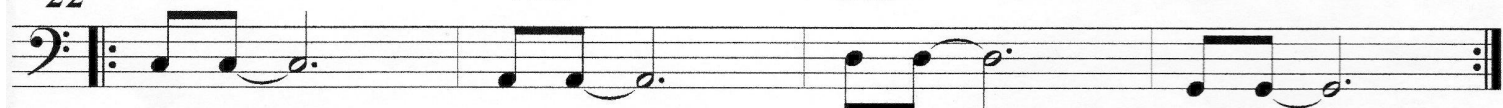


22 C

Am

Dm

G<sup>7</sup>



23 C

Am

Dm

G<sup>7</sup>



24 C

Am

Dm

G<sup>7</sup>



25

*C*

*Am*

*Dm*

*G7*

Musical staff for measure 25, bass clef. The staff contains four measures of music. Each measure begins with a double bar line and repeat dots. The notes are: G2 (quarter), G2 (quarter), G2 (quarter), G2 (quarter). The rests are: G2 (quarter), G2 (quarter), G2 (quarter), G2 (quarter).

26

*C*

*Am*

*Dm*

*G7*

Musical staff for measure 26, bass clef. The staff contains four measures of music. Each measure begins with a double bar line and repeat dots. The notes are: G2 (quarter), G2 (quarter), G2 (quarter), G2 (quarter). The rests are: G2 (quarter), G2 (quarter), G2 (quarter), G2 (quarter).

27

*C*

*Am*

*Dm*

*G7*

Musical staff for measure 27, bass clef. The staff contains four measures of music. Each measure begins with a double bar line and repeat dots. The notes are: G2 (quarter), G2 (quarter), G2 (quarter), G2 (quarter). The rests are: G2 (quarter), G2 (quarter), G2 (quarter), G2 (quarter).

28

*C*

*Am*

*Dm*

*G7*

Musical staff for measure 28, bass clef. The staff contains four measures of music. Each measure begins with a double bar line and repeat dots. The notes are: G2 (quarter), G2 (quarter), G2 (quarter), G2 (quarter). The rests are: G2 (quarter), G2 (quarter), G2 (quarter), G2 (quarter).

29

*C*

*Am*

*Dm*

*G7*

Musical staff for measure 29, bass clef. The staff contains four measures of music. Each measure begins with a double bar line and repeat dots. The notes are: G2 (quarter), G2 (quarter), G2 (quarter), G2 (quarter). The rests are: G2 (quarter), G2 (quarter), G2 (quarter), G2 (quarter).

30

*C*

*Am*

*Dm*

*G7*

Musical staff for measure 30, bass clef. The staff contains four measures of music. Each measure begins with a double bar line and repeat dots. The notes are: G2 (quarter), G2 (quarter), G2 (quarter), G2 (quarter). The rests are: G2 (quarter), G2 (quarter), G2 (quarter), G2 (quarter).

31

*C*

*Am*

*Dm*

*G7*

Musical staff for measure 31, bass clef. The staff contains four measures of music. Each measure begins with a double bar line and repeat dots. The notes are: G2 (quarter), G2 (quarter), G2 (quarter), G2 (quarter). The rests are: G2 (quarter), G2 (quarter), G2 (quarter), G2 (quarter).

32

*C*

*Am*

*Dm*

*G7*

Musical staff for measure 32, bass clef. The staff contains four measures of music. Each measure begins with a double bar line and repeat dots. The notes are: G2 (quarter), G2 (quarter), G2 (quarter), G2 (quarter). The rests are: G2 (quarter), G2 (quarter), G2 (quarter), G2 (quarter).

